


SEND Exhibition Tour at MK Gallery

This visual guide gives you lots of useful information about your visit to MK Gallery’s SEND Exhibition Tour of Vanessa Bell: A World of Form and Colour. If you have any questions at all, contact the team using the following details:

Rosie May
 Producer of Public Programmes, Inclusion
rmay@mkgallery.org
 (0)1908558315

Jack Keenan
 Inclusion Coordinator
jkeenan@mkgallery.org
 (0)1908558319

Who are MK Gallery?	
	<p>MK Gallery is an art gallery based in Milton Keynes.</p>

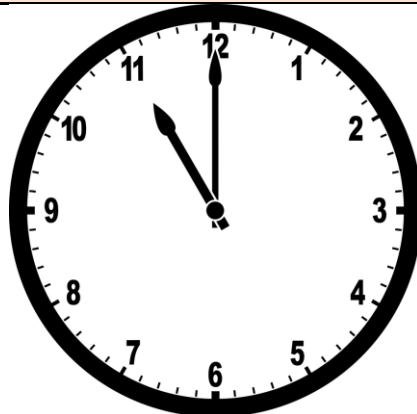


We have art exhibitions, a cinema and lots of fun activities for people to get involved in.



We also support children, young people, and adults with disabilities to get involved in different creative projects and explore our exhibitions.

What will happen at my SEND Exhibition Tour at MK Gallery?



At 11:00am you will arrive at MK Gallery.



You are coming to a SEND Exhibition Tour of Vanessa Bell: A World of Form and Cour



Vanessa Bell: A World of Form and Colour is an exhibition, featuring artworks, ceramics and furniture.



When you arrive, you will need to go to the main gallery building and go through the sliding doors.

This is the main gallery building.

Photo: Janie Airey Art Fund 2021



Supported using public funding by
ARTS COUNCIL ENGLAND





You will need to go to the front desk to collect your ticket for the tour.

There might be a queue, but it won't take long to get there.



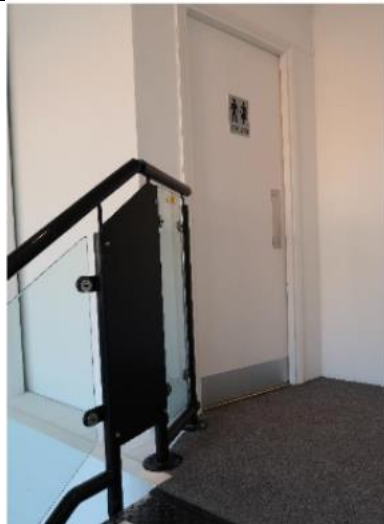
After this, you will need to head over to the Event Space to meet the Artist leading your tour.

This is the Event Space.



You will be led through the exhibition by an Artist called **Julia**.

This is **Julia**.

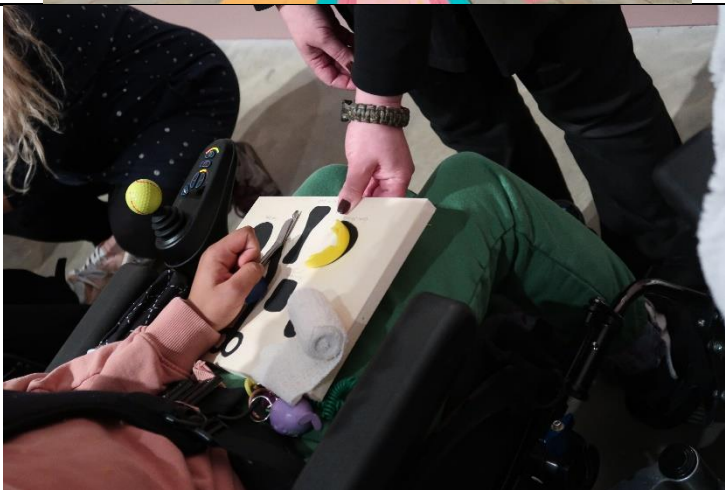


If you need the toilet whilst you are in the Event Space, you can use the toilets upstairs.

Photo: Janie Airey Art Fund 2021






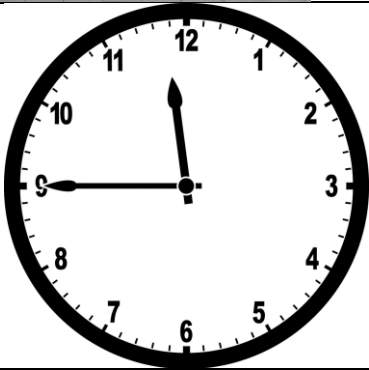
When everyone is ready, Julia will guide us over to the galleries to start our tour!



We are going to explore the exhibition using our senses.

Julia will have lots of interesting things that you could see, smell, touch, hear, wear, and taste.

	<p>The tour will last for around 30 minutes.</p>
	<p>It's your choice how you'd like to interact with the tour, and the other participants.</p>
	<p>If you need the toilet, you can leave the gallery and ask a member of staff where to find the nearest one.</p> <p>Or you can follow the WC signs.</p>
	<p>Or, you can use the changing places toilet, also in the main gallery building.</p> <p>This is the changing places toilet.</p> <p>A member of MK Gallery Staff can direct you to it.</p>

		<p>Once the tour is finished, you can go back over to the Event Space with Julia if you'd like. There will be space to relax, and also time to have another look at the props she used in the tour.</p>
		<p>At around 11:45am, the SEND Tour event will finish.</p>

We look forward to seeing you at the gallery soon!



Supported using public funding by
ARTS COUNCIL ENGLAND

